

# Yealink USB Connect

## QUICK REFERENCE GUIDE

### For Compatible Yealink Headsets



The Yealink USB Connect device manager client manages Yealink USB devices such as a WH62/WH63 and WH66/WH67 USB headsets.

The USB device manager is compatible with the Window 8 and above and macOS. Yealink USB Connect does not currently support running on a PC with the Apple M1 chip.

## GETTING STARTED

To get started, you will need to download the USB device manager client from the Yealink website. Click on the following link to begin the download process: [www.yealink.com/product/yuc](http://www.yealink.com/product/yuc).

**Yealink USB Connect**

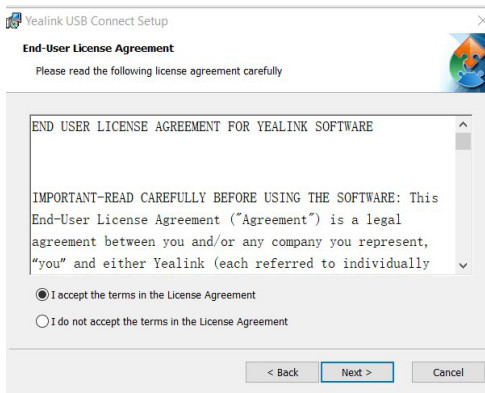
Personalize and manage your Yealink headsets, webcams and speakerphones

ONE FOR ALL   EASY TO USE   KEEP IT RUNNING

Download for WIN   Download for Intel MAC

- + Select your operating system and the USB Connect start up wizard will display.
- + Follow the wizard to complete the download.

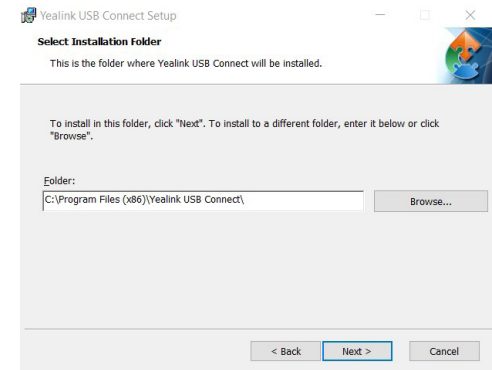
1. Read and Accept the End User agreement and click NEXT.



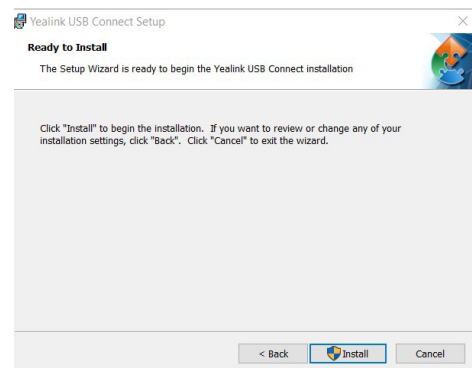
2. On the Welcome to the Wizard screen, click NEXT.



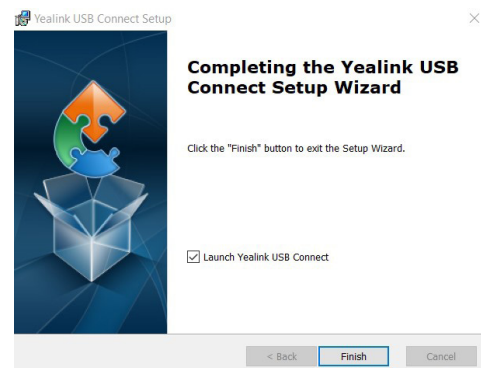
3. Select the installer folder and click NEXT.



4. On the Ready to Install screen, click INSTALL.



5. On the Complete the Setup Wizard screen, click FINISH.



6. Plug your USB device into your PC. The Yealink USB Connect App appears with settings for your connected device.

# Yealink USB Connect

## QUICK REFERENCE GUIDE

### For Compatible Yealink Headsets



## WHAT YOU SEE

The screenshot displays the Yealink USB Connect application window. The title bar reads "Yealink USB Connect" and "WH67". On the left is a navigation menu with options: "Device status" (selected), "Update device", "Device diagnost...", "Device settings", "Device recovery", and "Device feedback". The main area shows a photograph of a Yealink WH67 headset on its charging base. To the right of the photo is a "View data sheet" button. Further right is a table of device information:

Equipment model WH67	Firmware version 125.420.0.20
Serial number (SN) 808040D010000966	Bluetooth status Paired
Base RFPI 0371D7DD28	Headset IPUI 0291CE72A9
DECT Region US	

- + **Device Status** displays information for the connected devices.
- + **Update devices** displays the current status and if there is an update available, will give you the ability to run the update.
- + **Device Diagnostics** displays logs that record events or errors that may occur in your device. A system administrator may ask you for information from this tab.
- + **Device settings** will display the Basic and Advanced settings for the connected device. [See page 3.](#)
- + **Device recovery** provides options for rebooting the device or returning it to factory settings.
- + **Device feedback** will send a rating of the connected device to Yealink. Northland Communications will not see this.

# SETTINGS

The device settings are divided into basic setting and advanced settings will vary depending on the connected device.

## Basic Settings

SETTING	DESCRIPTION
<b>WH62/WH63</b>	
Keypad Tones	Enable/disable the paired headset to produce a sound when the keypad keys are pressed.
Local Ringtone	Enable/disable the base to play a built-in tone when receiving a call.
Speaker Volume	Adjusts the playback volume.
<b>WH66/WH67</b>	
Bluetooth Switch	Toggles Bluetooth on/off.
Backlight Active Level	Sets the backlight brightness when it is active.
Backlight Time	Sets the amount of time the backlight is active.
Teams User Name	Only available for the Teams version.
Dial Tone	Enable/disable the paired headset to play a dial tone when entering the dialing screen.
Keypad Tones	Enable/disable the paired headset to produce a sound when the keypad keys are pressed.
Local Ringtone	Enable/disable the base to play a built-in tone when receiving a call.
Speaker Volume	Adjusts the playback volume.
PC Ring Type	Changes the ringtone for the connected USB device.
Screen Saver	Change the waiting time and background for the screen saver. + Wait Time + Background: Select <b>Custom</b> to upload customer pictures (up to 3) from your local system.

## Advanced Settings

SETTING	DESCRIPTION
Mute Reminder	Enable/disable the paired headset to play a periodic audio reminder when the microphone is
Mute Reminder Interval	Configures the interval time when Mute reminder is enabled.
Platform	Change the platform between UC and Teams. Only available on the WH66/WH67.
Call Priority	Select which call takes priority when a second call is accepted. + <b>New call:</b> The first call is placed on hold and the new call is active. + <b>Current call:</b> The first call is active and the new call is placed on hold.
Call Device	Select which device to use for outgoing calls. Only available on the WH66/WH67 UC Version.
Auto Dial	Enable/disable the base to automatically dial the entered number within 5 seconds. Only available on the WH66/WH67.
Auto-Answer When Undocked	Enable/disable incoming calls to be answered when undocking the headset.
Open Line When Undocked	Enable/disable the ability to enter the dial screen when undocking the headset.
Wireless Range	Select the wireless range between the headset and base. When the headset exceeds the preset wireless range, it will prompt you that it is out of range.
Voice Announcement	Enable/disable the paired headset to play voice announcements.
Anti-Startle Protection	Configure which hearing technology to be used.
Daily Noise Exposure	Configures the daily noise exposure levels.

Need support? Connect with us at [www.northland.net/support](http://www.northland.net/support) or Dial **4357 (HELP)** or **315-671-6262** to speak to a Northland Training Representative